

Powerful and efficient
3-phase AC drive motor

Extremely maneuverable due to
compact design

Excellent driving and cornering stability
due to integrated support wheels

Maintenance-free integrated batteries
and integrated charger



EJE M15

Electric Pedestrian Pallet Truck (3,300 lbs.)

The EJE M15 truck was specifically designed for light-duty operation, with a maximum continuous operation time of approximately 2 hours. The 0.6-kW drive motor supports pallets carrying goods weighing up to 3,300 lbs. over short distances, making the EJE M15 ideal for use in small and medium-sized companies with an occasional need for goods transport.

Due to the maintenance-free, powerful 3-phase AC motor, energy consumption is reduced and even optimized, providing a rapid, smooth and cost-efficient method for customers to transport goods.

One of the main advantages of the EJE M15 is its ability to operate in confined spaces. Its compact design, short front-end length of just 17.1 inches and low overall height allows for maximum

maneuverability while offering operators with excellent visibility to the fork tips.

In addition, two sprung and cushioned support wheels help ensure smooth and stable travel. Maintenance free batteries used in conjunction with a built-in charger allow for flexible operation, eliminating the need for battery servicing or cleaning.

**JUNGHEINRICH**[®]

Technical Data

as of: 05/2016

Characteristics	1.1	Manufacturer				Jungheinrich		
	1.2	Model				EJE M15		
	1.3	Drive				electric		
	1.4	Operator type				pedestrian		
	1.5	Load capacity / rated load	Q	lbs	kg	3,300	1,500	
	1.6	Load center distance	c	in	mm	24	600	
	1.8	Load distance	x	in	mm	36.0	914	
	1.9	Wheelbase	y	in	mm	47.7	1,212	
	Weights	2.1.1	Net weight including battery (see row 6.5)		lbs	kg	569	258
2.2		Axle loading, loaded front / rear		lbs	kg	1,540 / 2,242	700 / 1,019	
2.3		Axle loading, unloaded front / rear		lbs	kg	365 / 117	166 / 53	
Wheels, Chassis	3.1	Tires				TPU / PU		
	3.2	Tire size, front		in	mm	Ø9.1 x 2.6	Ø230 x 65	
	3.3	Tire size, rear		in	mm	Ø3.1 x 2.8	Ø80 x 70	
	3.4	Additional wheels (dimensions)		in	mm	2x Ø3.1 x 1.6	2x Ø80 x 40	
	3.5	Wheels, number front rear (x = driven wheels)				1x + 2/4		
	3.6	Tread width, front	b ₁₀	in	mm	18.1	460	
	3.7	Tread width, rear	b ₁₁	in	mm	14.5	368	
General Dimensions	4.4	Maximum fork height (MFH)	h ₃ +h ₁₃	in	mm	8.1	205	
	4.9	Height of tiller in drive position min. / max.		h ₁₄	in	mm	29.1 / 46.9	740 / 1,190
	4.15	Height, lowered		h ₁₃	in	mm	3.3	85
	4.19	Overall length		l ₁	in	mm	62.4	1,585
	4.20	Length to fork face		l ₂	in	mm	17.1	435
	4.21	Overall width ²⁾		b ₁ /b ₂	in	mm	25.6	650
	4.22	Fork dimensions		h/w/l	in	mm	2.2 / 6.8 / 45.3	55 / 172 / 1,150
	4.25	Width across forks ¹⁾		b ₅	in	mm	21.7	550
	4.32	Ground clearance, center of wheelbase		m ₂	in	mm	1.4	35
	4.33	Aisle width (for pallets 40" x 48" crossways) ⁴⁾			in	mm	70.6	1,793
4.34	Aisle width (for pallets 40" x 48" lengthways) ⁴⁾			in	mm	73.3	1,862	
4.35	Turning radius		Wa	in	mm	53.4	1,357	
Performance	5.1	Travel speed, loaded / unloaded		mph	km/h	2.8 / 3.1	4.5 / 5	
	5.2	Lift speed, loaded / unloaded		ft / min	m / s	9.8 / 11.8	0.05 / 0.06	
	5.3	Lowering speed, loaded / unloaded		ft / min	m / s	15.7 / 7.9	0.08 / 0.04	
	5.8	Maximum gradeability, loaded / unloaded				%	4 / 10	
	5.10	Service brake				electric		
Motors	6.1	Drive motor rating S ₂ 60 min.		kW		0.6		
	6.2	Lift motor rating at S ₃ 5 %		kW		1.2		
	6.4	Battery voltage / nominal capacity		V / Ah		24 / 90 ³⁾		
	6.5	Battery weight		lbs	kg	116.8	53	
	6.6	Energy consumption according to VDI cycle		kWh / h		0.27		
	Other	8.1	Type of drive control				AC SpeedControl	
8.4		Sound pressure level at the operator's ear		dB(A)		66		

1) 24.6 inches (670 mm) also possible

2) If b₅ = 24.6 inches (670 mm), b₁/b₂ = 24.6 inches (670 mm)

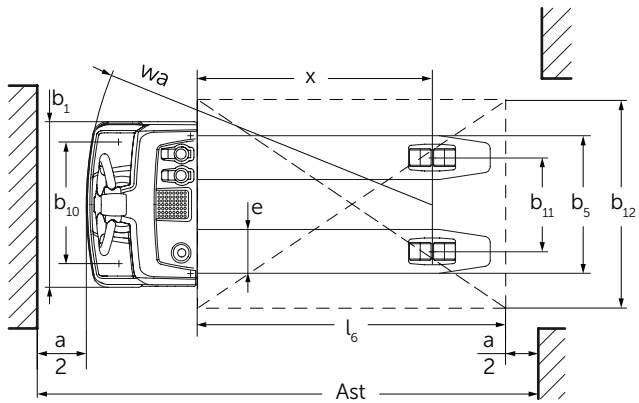
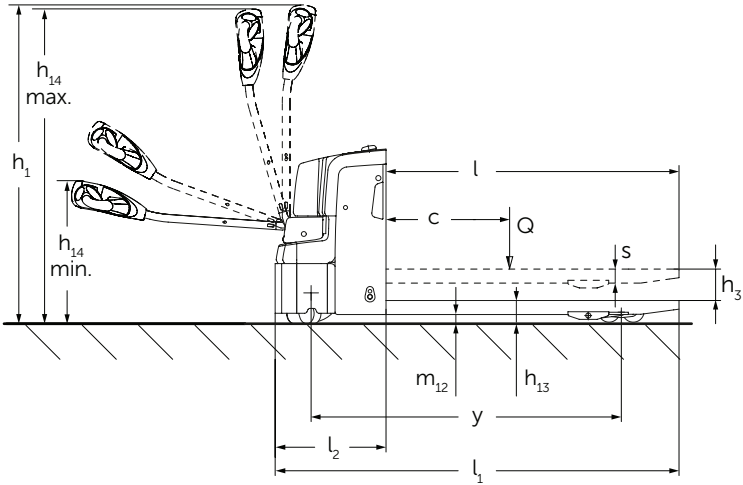
3) Specification battery voltage/nominal capacity at K20; at K5: 24V, 70Ah

4) Measurements include 7.9" safety clearance

In accordance with VDI Guideline 2198 this specification sheet provides details of the standard truck only. Non-standard tires, different masts, optional equipment, etc. may result in different values.

Note: Equipping this model (these models) with a power source (e.g. Lithium-ion, Hydrogen Fuel cell, etc.) that has not been previously approved by the factory is considered a modification. Per OSHA 1910.178 and ANSI/ITSDF B56.1, please consult with your factory representative prior to installing any non-OEM power source that has not been previously approved.

EJE M15



The Jungheinrich Advantage



Intuitive control panel

Innovative drive and control technology

Motors with 3-phase AC technology offer many advantages and more efficiency while simultaneously reducing the operating costs due to Jungheinrich's componentry synchronization:

- High levels of efficiency with excellent energy optimization.
- Rapid and smooth directional change without delay.
- Maintenance-free drive motor with no carbon brushes.

Energy efficiency

Optimized energy management increases efficiency and lifetime of components:

- Smart shut down: the EJE M15 shuts down automatically after 30 minutes of non-usage.
- Regenerative braking provides excellent energy recovery back to the truck.



Optimal stability with spring loaded support wheels

Compact design

Thanks to its compact design, the EJE M15 are perfect for usage in confined spaces.

- Excellent maneuverability due to short chassis dimension and low overall height.
- Operator BDI and instrumentation such as battery discharge indicator, hour-meter, emergency disconnect and key are strategically located on the truck.

Ergonomic operations

The trucks are perfectly adapted to the ergonomic needs of the operator:

- Reduced force required while steering due to low-mounted tiller.
- Dual-sided travel operation of tiller handle for ergonomic and intuitive use.

Optimum stability

The EJE M15 have two sprung support rollers installed alongside the drive wheel. These rollers increase the stability of the truck, providing smooth transport of loads.



Ergonomically-designed tiller head

Parts when you need them

Jungheinrich's Parts Fast or Parts Free Guarantee ensures next-business-day delivery by 5:00 PM of all Jungheinrich parts in the United States, or they're free, including freight. For customers in Canada and Mexico, the guarantee ensures shipping of parts within 24 hours from the time the order was placed by the dealer. See your local Jungheinrich dealer for program details.

* Programs may be subject to change without notice and may vary by region. Please ask your local Jungheinrich dealer for complete terms and conditions.

**The product shown may be different than the actual configuration based on market requirements.