

FB14-20A(C)N(T) Series

ELECTRIC-POWERED FORKLIFT TRUCKS

1.4 – 2.0 tons

INTELLIGENT AND AGILE

Meet the FB14-20A(C)N(T) Series. It's the most intelligent truck on the market and one of the most durable. Packed with features, it delivers the maneuverability, power and reliability you expect from Mitsubishi Forklift Trucks.

SPECIFICATIONS

FB14ANT	
FB16ACNT	FB16ACN
FB18ACNT	FB18ACN
FB16ANT	FB16AN
FB18ANT	FB18AN
FB20ANT	FB20AN



**WHEN
RELIABILITY IS
EVERYTHING...**

FB14-20A(C)N(T) Series

ELECTRIC-POWERED FORKLIFT TRUCKS

1.4 – 2.0 tons

Designed and engineered to perform, these 48-volt three and four-wheel electrics work intuitively, tailoring their performance to your individual operator.

Its sophisticated software analyzes behavior in real-time and automatically adjusts the truck's behavior for safe, but productive performance.

OPERATOR COMPARTMENT AND CONTROLS

- **Large, ultra-comfortable operating space** has been enhanced to meet the needs of drivers of different shapes and sizes to limit fatigue during operation.
- **Spacious footwell that provides additional comfort to operators of different sizes to enjoy a natural, ergonomic foot position.**
- **Optimized mast, steering wheel location and the designs of the dash and counterweight** helps maximize the visibility to the load, forks and around the truck for safe, confident operation in tight spaces.
- **Optimized pedal positioning** encourages a more natural foot position for drivers of all sizes – short and tall included – to keep fatigue at bay.
- **Clear, informative full-color display** is easy to read from any angle (even direct sunlight). It's perfectly positioned for operator reference and doesn't reduce the truck's all-round visibility.

- **Optional touch-sensitive fingertip controls** are spring-loaded for a natural feeling; the gentler the touch, the finer the control.

FRAME AND BODY

- **Fast-access battery compartment** offers easy opening for maximum ventilation during charging and quick battery checks and maintenance.

MAST AND FORK ASSEMBLY

- **Passive Sway Control** dampens any elevated load motion above 3.5 m by compensating with micro chassis movements.

DRIVE

- **High-efficiency motors** offer a high RPM range for precise control when accelerating.
- **Sensitive Drive System (SDS)** smooths start and stop movements, increases agility and adapts to the speed of operators' foot movements.
- **Intelligent curve control** senses the angle of a turn and responds – automatically reducing speed early in the maneuver – helping to ensure stability and accurate, positive cornering.
- **>100° steering axle** with dual-drive motors offers smooth 'on the spot' turning, with no initial 'push'.

BRAKES

- **The standard electromagnetic parking brake standard does not require hand levers to release the brakes, helping to reduce maintenance costs and total cost of ownership.**

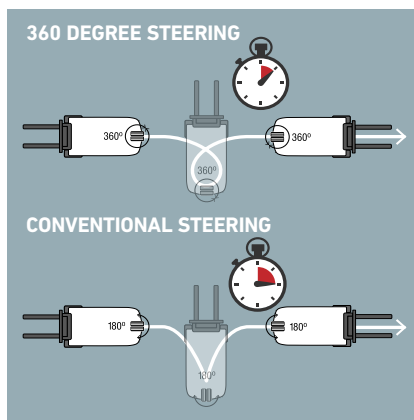
- **Automatic parking brake with hill hold** stops the truck automatically when the accelerator is not engaged, and prevents rolling on ramps .

HYDRAULICS

- **Load-sensing hydraulic system** automatically adjusts truck's performance when handling loads at heights above 2.0 m – for consistently efficient operations, standard for masts from 3.5m.

STEERING SYSTEM

- **The optimized steering system, automatically adjusts power to steering for smooth operations and maximum control regardless the speed or work intensity.**
- **Time-saving 360° steering option on 3-wheel models** means the operator keeps the truck in constant motion – saving seconds on every turn.



There is more information:
logisnextamericas.com/mit

For more extensive information
 please visit our website
logisnextamericas.com/mit



VDI - PERFORMANCE & DIMENSIONS

CHARACTERISTICS				Mitsubishi Forklift Trucks	Mitsubishi Forklift Trucks	Mitsubishi Forklift Trucks	Mitsubishi Forklift Trucks	Mitsubishi Forklift Trucks	Mitsubishi Forklift Trucks
1.1	Manufacturer (abbreviation)			FB14ANT	FB16ACNT	FB18ACNT	FB16ANT	FB18ANT	FB20ANT
1.2	Manufacturer's model designation			Electric	Electric	Electric	Electric	Electric	Electric
1.3	Power source: (battery, diesel, LP gas, petrol)			Seated	Seated	Seated	Seated	Seated	Seated
1.4	Operator type: pedestrian, (operator)-standing, -seated			1250	1425	1600	1425	1600	1800
1.5	Load capacity	Q	kg	600	600	600	600	600	600
1.6	Load center distance	c	mm	343	343	343	343	343	358
1.8	Load distance, axle to fork face	x	mm	1320	1320	1320	1428	1428	1428
1.9	Wheelbase	y	mm						
WEIGHT									
2.1	Truck weight, without load / including battery (simplex mast, lowest lift height)			2790	2966	3156	2949	3119	3342
2.2	Axle loading with maximum load, front / rear (simplex mast, lowest lift height)			3688 / 502	4015 / 551	4351 / 605	4020 / 529	4333 / 586	4711 / 631
2.3	Axle loading without load, front / rear (simplex mast, lowest lift height)			1394 / 1396	1393 / 1573	1401 / 1754	1476 / 1474	1471 / 1649	1509 / 1833
WHEELS, DRIVE TRAIN									
3.1	Tires: V=solid, L=pneumatic, SE=solid pneumatic - front / rear			SE	SE	SE	SE	SE	SE
3.2	Tire dimensions, front			18 x 7-8	18 x 7-8	18 x 7-8	18 x 7-8	18 x 7-8	200 / 50-10
3.3	Tire dimensions, rear			140 / 55-9	140 / 55-9	140 / 55-9	140 / 55-9	140 / 55-9	140 / 55-9
3.5	Number of wheels, front / rear (x=driven)			2 x / 2	2 x / 2	2 x / 2	2 x / 2	2 x / 2	2 x / 2
3.6	Truck width (center of tires), front	b10	mm	930	930	930	930	930	938
3.7	Truck width (center of tires), rear	b11	mm	174	174	174	174	174	174
DIMENSIONS									
4.1	Mast tilt, forwards / backwards			α/β	°	5 / 7.5	5 / 7.5	5 / 7.5	5 / 7.5
4.2	Height with mast lowered (see tables)			h1	mm	2125	2125	2125	2125
4.3	Free lift (see tables)			h2	mm	80	80	80	80
4.4	Lift height (see tables)			h3	mm	3290	3290	3290	3290
4.5	Overall height with mast raised			h4	mm	4335	4335	4335	4335
4.7	Height to top of overhead guard			h6	mm	2050	2050	2050	2050
4.8	Seat height			h7	mm	1035	1035	1035	1035
4.12	Tow coupling height			h10	mm	540	540	540	540
4.19	Overall length			l1	mm	2996	2996	3104	3119
4.20	Length to fork face (includes fork thickness)			l2	mm	1846	1846	1954	1969
4.21	Overall width			b1/b2	mm	1090	1090	1090	1140
4.22	Fork dimensions (thickness, width, length)			s / e / l	mm	35 x 100 x 1150	35 x 100 x 1150	35 x 100 x 1150	35 x 100 x 1150
4.23	Fork carriage to DIN 15 173 A/B/no					2A	2A	2A	2A
4.24	Fork carriage width			b3	mm	920	920	920	920
4.31	Ground clearance under mast, with load			m1	mm	95	95	95	95
4.32	Ground clearance at center of wheelbase, with load (forks lowered)			m2	mm	95	95	95	95
4.33	Working aisle width with 1000 x 1200 mm pallets, crosswise			Ast	mm	3173	3173	3281	3295
4.34a	Working aisle width with 800 x 1200 mm pallets, lengthwise			Ast	mm	3296	3296	3404	3419
4.35	Turning circle radius			Wa	mm	1502	1502	1610	1610
4.36	Minimum distance between centers of rotation			b13	mm	0	0	0	0
PERFORMANCE									
5.1	Travel speed, with / without load				km/h	16 / 16	16 / 16	16 / 16	16 / 16
5.2	Lifting speed, with / without load				m/s	0.55 / 0.62	0.52 / 0.62	0.46 / 0.62	0.62 / 0.42
5.3	Lowering speed, with / without load				m/s	0.56 / 0.56	0.56 / 0.56	0.56 / 0.56	0.56 / 0.56
5.5	Rated drawbar pull, with / without load				N	4900 / 5200	4900 / 5200	4800 / 5100	4900 / 5200
5.6	Maximum drawbar pull, with / without load (5 min short duty)				N	15000 / 15300	14900 / 15200	14900 / 15200	14900 / 15200
5.7	Gradeability, with / without load				%	16 / 26	15 / 25	13 / 23	15 / 25
5.8	Maximum gradeability, with / without load				%	27 / 35	27 / 35	26 / 35	27 / 35
5.9	Acceleration time (10 metres) with / without load				s	4.0 / 3.8	4.1 / 3.8	4.2 / 3.8	4.1 / 3.8
5.10	Service brakes (mechanical / hydraulic / electric / pneumatic)					electric	electric	electric	electric
ELECTRIC MOTORS									
6.1	Drive motor capacity (60 min. short duty)				kW	2 x 5.5	2 x 5.5	2 x 5.5	2 x 5.5
6.2	Lift motor output at 15% duty factor				kW	10	10	10	10
6.3	Battery to DIN 43 531 / 35 / 36 A/B/C/no					DIN 43531 A/no	DIN 43531 A/no	DIN 43531 A/no	DIN 43531 A/no
6.4	Battery voltage/capacity at 5-hour discharge				V/Ah	500-625	500-625	500-625	625-750
6.5	Battery weight				kg	679	679	812	812
6.6a	Energy consumption according to EN 16796				kWh/h	3.7	3.9	4.2	4.5
MISCELLANEOUS									
8.1	Type of drive control					AC	AC	AC	AC
10.1	Maximum operating pressure for attachments				bar	210	210	210	210
10.2	Oil flow for attachments				l/min	30	30	30	30
10.8	Towing coupling design / DIN type, ref.					DIN15170-H	DIN15170-H	DIN15170-H	DIN15170-H

ELECTRIC COUNTERBALANCE

FB14 - 20A(C)NT Series

3 wheel models
1.4 - 2.0 tons



MAST PERFORMANCE AND CAPACITY

FB14 - 20A(C)NT Series 3 wheel models

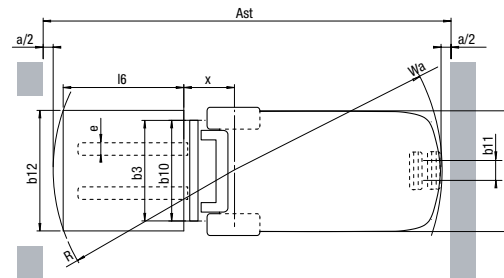
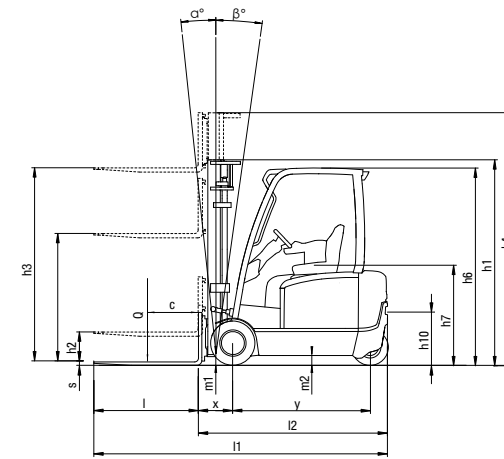


MAST TYPE	FB14-20A(C)NT						FB14ANT	FB16ACNT	FB18ACNT	FB16ANT	FB18ANT	FB20ANT	
	h3 mm	h1 mm	h4 mm	h2 / h5 mm	tilt angle fwd / rew degrees		Q@ c=600 mm kg	Q@ c=600 mm kg	Q@ c=600 mm kg	Q@ c=600 mm kg	Q@ c=600 mm kg	Q@ c=600 mm kg	
					STD	CABIN							
SIMPLEX	2000**	1480*	3045	80	5 / 6	N.A.	1250	1425	1600	1425	1600	1800	
	2560**	1760*	3605	80	5 / 6	5 / 5	1250	1425	1600	1425	1600	1800	
	2760**	1860*	3805	80	5 / 7.5	5 / 6	1250	1425	1600	1425	1600	1800	
	3000	1980*	4045	80	5 / 7.5	5 / 6	1250	1425	1600	1425	1600	1800	
	3290	2125	4335	80	5 / 7.5	5 / 7.5	1250	1425	1600	1425	1600	1800	
	3530**	2245	4575	80	5 / 7.5	5 / 7.5	1250	1425	1600	1425	1600	1800	
	3720	2385	4765	80	5 / 7.5	5 / 7.5	1250	1425	1600	1425	1600	1800	
	4090	2570	5135	80	5 / 7.5	5 / 7.5	1250	1425	1600	1425	1600	1800	
	4480	2775	5525	80	5 / 5	5 / 5	1225	1400	1575	1425	1600	1800	
	5000	3035	6045	80	5 / 5	5 / 5	1175	1350	1525	1375	1575	1750	
DUPLX	2800**	1880*	3845	835	5 / 6	5 / 6	1250	1425	1600	1425	1600	1800	
	3000	1980*	4045	935	5 / 6	5 / 6	1250	1425	1600	1425	1600	1800	
	3295	2125	4340	1080	5 / 6	5 / 6	1250	1425	1600	1425	1600	1800	
	3515**	2245	4560	1200	5 / 6	5 / 6	1250	1425	1600	1425	1600	1800	
	3700	2385	4745	1340	5 / 6	5 / 6	1250	1425	1600	1425	1600	1800	
	4030	2570	5075	1525	5 / 6	5 / 6	1250	1425	1600	1425	1600	1800	
	TRIPLEX	3710	1780*	4755	735	5 / 6	5 / 3.5	1250	1425	1600	1425	1600	1800
		4010	1880*	5055	835	5 / 6	5 / 3.5	1250	1425	1600	1425	1600	1800
		4310	1980*	5355	935	5 / 6	5 / 5	1250	1425	1600	1425	1600	1800
		4750	2125	5795	1080	5 / 6	5 / 5	1200	1375	1550	1400	1575	1775
5090		2245	6135	1200	5 / 3.5	5 / 3.5	1175	1325	1500	1400	1550	1725	
5490		2385	6535	1340	5 / 3.5	5 / 3.5	1125	1300	1450	1350	1500	1675	
5990		2570	7035	1525	5 / 3.5	5 / 3.5	1075	1250	1400	1275	1450	1625	
6490		2830	7535	1785	5 / 3.5	5 / 3.5	1025	1200	1350	1225	1350	1550	
7000	3035	8045	1990	5 / 3.5	5 / 3.5	975	1050	1050	1050	1050	1150		

* Lower than overhead guard **CSM

BATTERY DIMENSIONS		14ANT	16ACNT	18ACNT	16ANT	18ANT	20ANT
Battery voltage	V	48	48	48	48	48	48
Capacity at a 5-hour discharge	Ah	500 / 625	500 / 625	500 / 625	625 / 750	625 / 750	625 / 750
Battery weight, Min.	kg	679 / 812	679 / 812	679 / 812	812 / 900	812 / 900	812 / 900
Battery weight, Max.	kg	1000 / 1000	1000 / 1000	1000 / 1000	1160 / 1160	1160 / 1160	1160 / 1160
BATTERY BOX DIMENSIONS							
Length	mm	522	522	522	630	630	630
Width	mm	830 / 1006	830 / 1006	830 / 1006	830 / 1006	830 / 1006	830 / 1006
Height	mm	627	627	627	627	627	627
BATTERY COMPARTMENT SIZE							
Length	mm	532	532	532	640	640	640
Width	mm	850 / 1018	850 / 1018	850 / 1018	850 / 1018	850 / 1018	850 / 1018
Height	mm	690 (660*)	690 (660*)	690 (660*)	690 (660*)	690 (660*)	690 (660*)

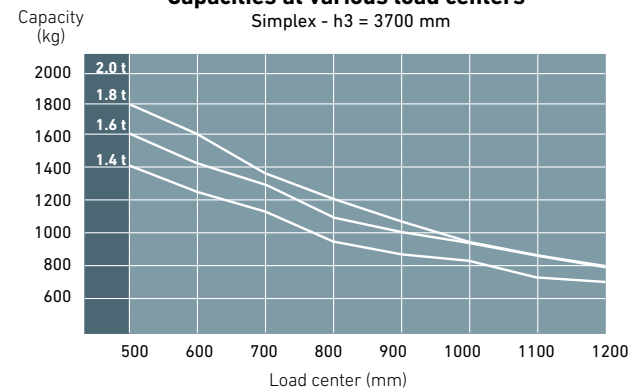
*With battery exchange rolls



- Ast = $Wa + R + a$
- Ast = Working aisle width
- Wa = Turning radius
- a = Safety clearance = 2×100 mm
- R = $\sqrt{(l6 + x)^2 + (b12 / 2)^2}$
- b12 = Pallet width (1200 mm)
- h1 = Height with mast lowered
- h2 = Standard free lift
- h3 = Lift height
- h4 = Height with mast raised
- h5 = Full free lift
- Q = Lifting capacity, rated load
- c = Load center (distance)

Note:
Equipping this model with a power source (e.g. Lithium-ion, Hydrogen Fuel cell, etc.) that has not been previously approved by the factory is considered a modification. Per OSHA 1910.178 and ANSI/ITSDF B56.1, please consult with your factory representative prior to installing any non-OEM power source that has not been previously approved.

Capacities at various load centers
Simplex - h3 = 3700 mm



VDI - PERFORMANCE & DIMENSIONS

CHARACTERISTICS				Mitsubishi Forklift Trucks	Mitsubishi Forklift Trucks	Mitsubishi Forklift Trucks	Mitsubishi Forklift Trucks	Mitsubishi Forklift Trucks
1.1	Manufacturer (abbreviation)			FB16ACN	FB18ACN	FB16AN	FB18AN	FB20AN
1.2	Manufacturer's model designation			Electric	Electric	Electric	Electric	Electric
1.3	Power source: (battery, diesel, LP gas, petrol)			Seated	Seated	Seated	Seated	Seated
1.4	Operator type: pedestrian, (operator)-standing, -seated			1425	1600	1425	1600	1800
1.5	Load capacity	Q	kg	600	600	600	600	600
1.6	Load center distance	c	mm	343	343	343	343	358
1.8	Load distance, axle to fork face	x	mm	1394	1394	1502	1502	1502
1.9	Wheelbase	y	mm					
WEIGHT								
2.1	Truck weight, without load / including battery (simplex mast, lowest lift height)		kg	2944	3114	2957	3097	3287
2.2	Axle loading with maximum load, front / rear (simplex mast, lowest lift height)		kg	3990 / 554	4311 / 603	4008 / 550	4295 / 603	4668 / 620
2.3	Axle loading without load, front / rear (simplex mast, lowest lift height)		kg	1422 / 1522	1422 / 1692	1510 / 1448	1484 / 1613	1525 / 1762
WHEELS, DRIVE TRAIN								
3.1	Tires: V=solid, L=pneumatic, SE=solid pneumatic - front / rear			SE	SE	SE	SE	SE
3.2	Tire dimensions, front			18 x 7-8	18 x 7-8	18 x 7-8	18 x 7-8	200 / 50-10
3.3	Tire dimensions, rear			16 x 6-8	16 x 6-8	16 x 6-8	16 x 6-8	16x6-8
3.5	Number of wheels, front / rear (x=driven)			2 x / 2	2 x / 2	2 x / 2	2 x / 2	2 x / 2
3.6	Truck width (center of tires), front	b10	mm	930	930	930	930	938
3.7	Truck width (center of tires), rear	b11	mm	898	898	898	898	898
DIMENSIONS								
4.1	Mast tilt, forwards / backwards	α/β	°	5 / 7.5	5/7.5	5/7.5	5/7.5	5/7.5
4.2	Height with mast lowered (see tables)	h1	mm	2125	2125	2125	2125	2125
4.3	Free lift (see tables)	h2	mm	80	80	80	80	80
4.4	Lift height (see tables)	h3	mm	3290	3290	3290	3290	3290
4.5	Overall height with mast raised	h4	mm	4335	4335	4335	4335	4335
4.7	Height to top of overhead guard	h6	mm	2050	2050	2050	2050	2050
4.8	Seat height	h7	mm	1035	1035	1035	1035	1035
4.12	Tow coupling height	h10	mm	520	520	520	520	520
4.19	Overall length	l1	mm	3152	3152	3260	3260	3275
4.20	Length to fork face (includes fork thickness)	l2	mm	2002	2002	2110	2110	2125
4.21	Overall width	b1/b2	mm	1090	1090	1090	1090	1140
4.22	Fork dimensions (thickness, width, length)	s / e / l	mm	35 x 100 x 1150	35 x 100 x 1150	35 x 100 x 1150	35 x 100 x 1150	35 x 100 x 1150
4.23	Fork carriage to DIN 15 173 A/B/no			2A	2A	2A	2A	2A
4.24	Fork carriage width	b3	mm	920	920	920	920	920
4.31	Ground clearance under mast, with load	m1	mm	95	95	95	95	95
4.32	Ground clearance at center of wheelbase, with load (forks lowered)	m2	mm	95	95	95	95	95
4.33	Working aisle width with 1000 x 1200 mm pallets, crosswise	Ast	mm	3333	3333	3441	3441	3455
4.34a	Working aisle width with 800 x 1200 mm pallets, lengthwise	Ast	mm	3456	3456	3564	3564	3579
4.35	Turning circle radius	Wa	mm	1662	1662	1770	1770	1770
4.36	Minimum distance between centers of rotation	b13	mm	0	0	0	0	0
PERFORMANCE								
5.1	Travel speed, with / without load		km/h	17 / 17	17 / 17	17 / 17	17 / 17	17 / 17
5.2	Lifting speed, with / without load		m/s	0.52 / 0.62	0.46 / 0.62	0.52 / 0.62	0.46 / 0.62	0.62 / 0.42
5.3	Lowering speed, with / without load		m/s	0.56 / 0.56	0.56 / 0.56	0.56 / 0.56	0.56 / 0.56	0.56 / 0.56
5.5	Rated drawbar pull, with / without load		N	4900 / 5200	4800 / 5100	4900 / 5200	4800 / 5100	4700 / 5100
5.6	Maximum drawbar pull, with / without load (5 min short duty)		N	14900 / 15200	14900 / 15200	15000 / 15300	14900 / 15200	14800 / 15200
5.7	Gradeability, with / without load		%	15 / 25	14 / 23	15 / 26	14 / 23	12 / 21
5.8	Maximum gradeability, with / without load		%	27 / 35	26 / 35	27 / 35	26 / 35	24 / 35
5.9	Acceleration time (10 metres) with / without load		s	4.1 / 3.8	4.2 / 3.8	4.0 / 3.8	4.2 / 3.8	3.9 / 4.4
5.10	Service brakes (mechanical / hydraulic / electric / pneumatic)			electric	electric	electric	electric	electric
ELECTRIC MOTORS								
6.1	Drive motor capacity (60 min. short duty)		kW	2 x 5.5	2 x 5.5	2 x 5.5	2x5.5	2x5.5
6.2	Lift motor output at 15% duty factor		kW	10	10	10	10	10
6.3	Battery to DIN 43 531 / 35 / 36 A/B/C/no			DIN 43531 A/no	DIN 43531 A/no	DIN 43531 A/no	DIN 43531 A/no	DIN 43531 A/no
6.4	Battery voltage/capacity at 5-hour discharge		V/Ah	500-625	500-625	625-750	625-750	625-750
6.5	Battery weight		kg	679	679	679	812	812
6.6a	Energy consumption according to EN 16796		kWh/h	3.9	4.2	3.9	4.2	4.5
MISCELLANEOUS								
8.1	Type of drive control			AC	AC	AC	AC	AC
10.1	Maximum operating pressure for attachments		bar	210	210	210	210	210
10.2	Oil flow for attachments		l/min	30	30	30	30	30
10.8	Towing coupling design / DIN type, ref.		dB(A)	DIN15170-H	DIN15170-H	DIN15170-H	DIN15170-H	DIN15170-H

ELECTRIC COUNTERBALANCE

FB16 - 20A(C)N Series

4 wheel models

1.6 - 2.0 tons



MAST PERFORMANCE AND CAPACITY

FB16 - 20A(C)N Series 4 wheel models

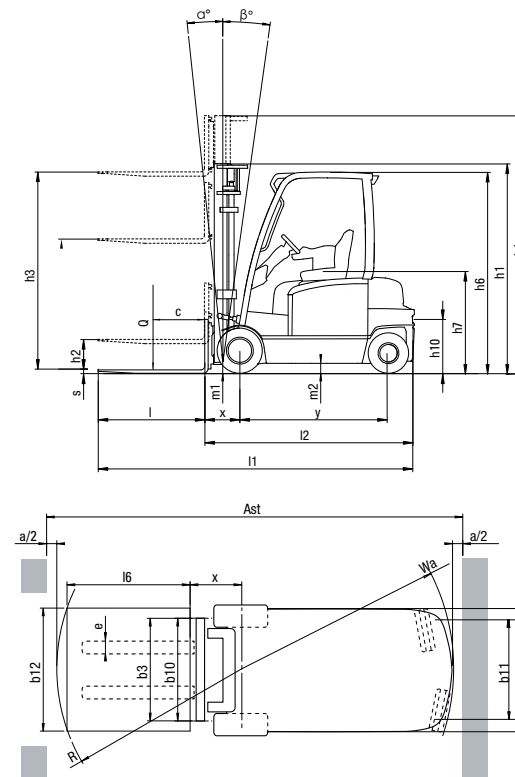


MAST TYPE	FB16-20A(C)N						FB16ACN	FB18ACN	FB16AN	FB18AN	FB20AN	
	h3 mm	h1 mm	h4 mm	h2 / h5 mm	tilt angle fwd / rew degrees		Q@ c=600 mm kg	Q@ c=600 mm kg	Q@ c=600 mm kg	Q@ c=600 mm kg	Q@ c=600 mm kg	
					STD	CABIN						
SIMPLEX	2000**	1480*	3045	80	5 / 6	N.A.	1425	1600	1425	1600	1800	
	2560**	1760*	3605	80	5 / 6	5 / 5	1425	1600	1425	1600	1800	
	2760**	1860*	3805	80	5 / 7.5	5 / 6	1425	1600	1425	1600	1800	
	3000	1980*	4045	80	5 / 7.5	5 / 6	1425	1600	1425	1600	1800	
	3290	2125	4335	80	5 / 7.5	5 / 7.5	1425	1600	1425	1600	1800	
	3530**	2245	4575	80	5 / 7.5	5 / 7.5	1425	1600	1425	1600	1800	
	3720	2385	4765	80	5 / 7.5	5 / 7.5	1425	1600	1425	1600	1800	
	4090	2570	5135	80	5 / 7.5	5 / 7.5	1425	1600	1425	1600	1800	
	4480	2775	5525	80	5 / 5	5 / 5	1425	1600	1425	1600	1800	
	5000	3035	6045	80	5 / 5	5 / 5	1400	1575	1425	1600	1800	
DUPLIX	2800**	1880*	3845	835	5 / 6	5 / 6	1425	1600	1425	1600	1800	
	3000	1980*	4045	935	5 / 6	5 / 6	1425	1600	1425	1600	1800	
	3295	2125	4340	1080	5 / 6	5 / 6	1425	1600	1425	1600	1800	
	3515**	2245	4560	1200	5 / 6	5 / 6	1425	1600	1425	1600	1800	
	3700	2385	4745	1340	5 / 6	5 / 6	1425	1600	1425	1600	1800	
	4030	2570	5075	1525	5 / 6	5 / 6	1425	1600	1425	1600	1800	
	TRIPLEX	3710	1780*	4755	735	5 / 6	5 / 3.5	1425	1600	1425	1600	1800
		4010	1880*	5055	835	5 / 6	5 / 3.5	1425	1600	1425	1600	1800
		4310	1980*	5355	935	5 / 6	5 / 5	1425	1600	1425	1600	1800
		4750	2125	5795	1080	5 / 6	5 / 5	1425	1600	1425	1600	1800
5090		2245	6135	1200	5 / 3.5	5 / 3.5	1375	1550	1425	1600	1775	
5490		2385	6535	1340	5 / 3.5	5 / 3.5	1325	1500	1375	1550	1725	
5990		2570	7035	1525	5 / 3.5	5 / 3.5	1275	1450	1325	1500	1650	
6490		2830	7535	1785	5 / 3.5	5 / 3.5	1225	1400	1275	1400	1600	
7000	3035	8045	1990	5 / 3.5	5 / 3.5	1075	1075	1075	1075	1125		

* Lower than overhead guard **CSM

BATTERY DIMENSIONS		16ACN	18ACN	16AN	18AN	20AN
Battery voltage	V	48	48	48	48	48
Capacity at a 5-hour discharge	Ah	500 / 625	500 / 625	625 / 750	625 / 750	625 / 750
Battery weight, Min.	kg	679 / 812	679 / 812	812 / 900	812 / 900	812 / 900
Battery weight, Max.	kg	1000 / 1000	1000 / 1000	1160 / 1160	1160 / 1160	1160 / 1160
BATTERY BOX DIMENSIONS						
Length	mm	522	522	630	630	630
Width	mm	830 / 1006	830 / 1006	830 / 1006	830 / 1006	830 / 1006
Height	mm	627	627	627	627	627
BATTERY COMPARTMENT SIZE						
Length	mm	532	532	640	640	640
Width	mm	850 / 1018	850 / 1018	850 / 1018	850 / 1018	850 / 1018
Height	mm	690 (660*)	690 (660*)	690 (660*)	690 (660*)	690 (660*)

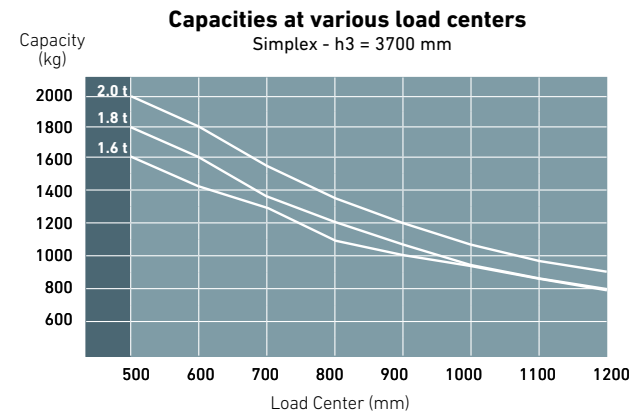
*With battery exchange rolls



$Ast = Wa + R + a$
 Ast = Working aisle width
 Wa = Turning radius
 a = Safety clearance = 2 x 100 mm
 $R = \sqrt{(l6 + x)^2 + (b12 / 2 - b13)^2}$
 b12 = Pallet width (1200 mm)

h1 = Height with mast lowered
 h2 = Standard free lift
 h3 = Lift height
 h4 = Height with mast raised
 h5 = Full free lift
 Q = Lifting capacity, rated load
 c = Load center (distance)

Note:
 Equipping this model with a power source (e.g. Lithium-ion, Hydrogen Fuel cell, etc.) that has not been previously approved by the factory is considered a modification. Per OSHA 1910.178 and ANSI/ITSDF B56.1, please consult with your factory representative prior to installing any non-OEM power source that has not been previously approved.



WHEN RELIABILITY IS EVERYTHING...



The reputation that Mitsubishi Forklift Trucks enjoys for endurance and reliability has likened them to the quality and enduring value of a diamond.

YOU'LL NEVER WORK ALONE

As your local authorized dealer, we are here to keep your trucks working – through our extensive experience, our technical excellence and our commitment to customer care.

We are your local experts, backed by efficient channels to the entire organization of Mitsubishi Forklift Trucks.

No matter where you are, we are close by – with the capability to meet your needs.

Discover how Mitsubishi Forklift Trucks give you more from your local authorized dealer or when you visit our website logisnextamericas.com/mit

Performance specifications may vary depending on standard manufacturing tolerances, vehicle condition, types of tires, floor or surface conditions, applications or operating environment. Trucks may be shown with non-standard options. Specific performance requirements and locally available configurations should be discussed with your distributor of Mitsubishi forklift trucks. We follow a policy of continual product improvement. For this reason, some materials, options and specifications could change without notice.

**The product shown may be different than the actual configuration based on market requirements.



CESM2016 (03/20) © 2020 MCFE, MCFA