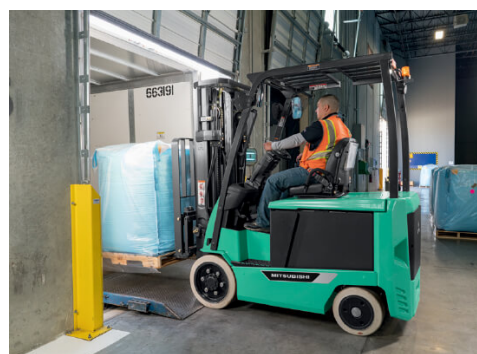
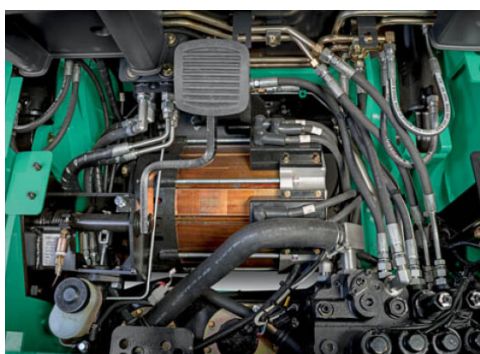




Mitsubishi 4,500 - 6,500 lb. Electric Cushion Tire Forklifts

Contact us
for price

Images





Description

The 4,500-6,500 lb. series of electric cushion tire forklifts features exceptional comfort and durable construction. Designed to deliver high performance while being extremely efficient, this series maximizes power while using less energy. Seat-side hydraulic levers give the operator added comfort and ease in controlling the lift functions, while the truck's rock-solid frame ensures added stability during operation.

Additional Information

Manufacturer

Mitsubishi Forklift Trucks

Certifications

Payment details

Financing

Shipping & pickup

Buyer is responsible for shipping arrangements and all costs related to transporting the equipment including permits, tear-down, cranes, or other incidentals that may be required to legally transport your purchase.

Following the settlement of the outstanding balance, arrangements must be made immediately to have equipment picked up within ten (10) business days as Toromont may, at its discretion, assess storage fees.

FAQ

