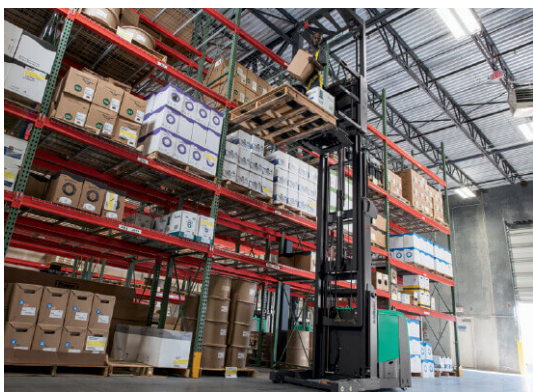
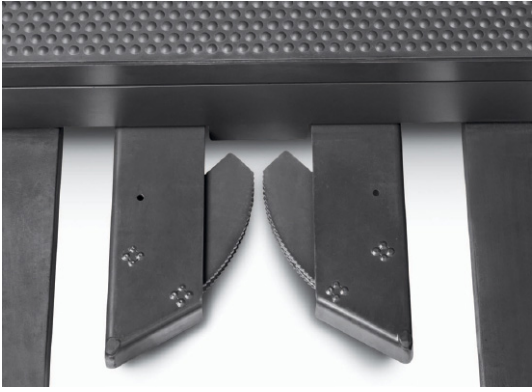


# Mitsubishi 3,000 lb. High-Level Electric Order Picker

Contact us  
for price

## Images





## Description

---

With a load capacity of up to 3,000 lbs., the EOP15N3 high-level order picker lifts up to 30 feet without sacrificing on stability. Featuring advanced AC technology, this truck provides strong acceleration, high lift/lower speeds, low energy consumption and long run times for greater productivity.

## Additional Information

---

Manufacturer

Mitsubishi Forklift Trucks

## Certifications

---

## Payment details

---

## Financing

---

## Shipping & pickup

---

Buyer is responsible for shipping arrangements and all costs related to transporting the equipment including permits, tear-down, cranes, or other incidentals that may be required to legally transport your purchase.

Following the settlement of the outstanding balance, arrangements must be made immediately to have equipment picked up within ten (10) business days as Toromont may, at its discretion, assess storage fees.

## FAQ

---

